

Measuring Guide

This information will provide our designers with everything they need.

You Will Need:



Tape Measure



Pen/Pencil



This Measuring Guide

Name:

Phone:

Email:

Door Style/Finish:

Address:

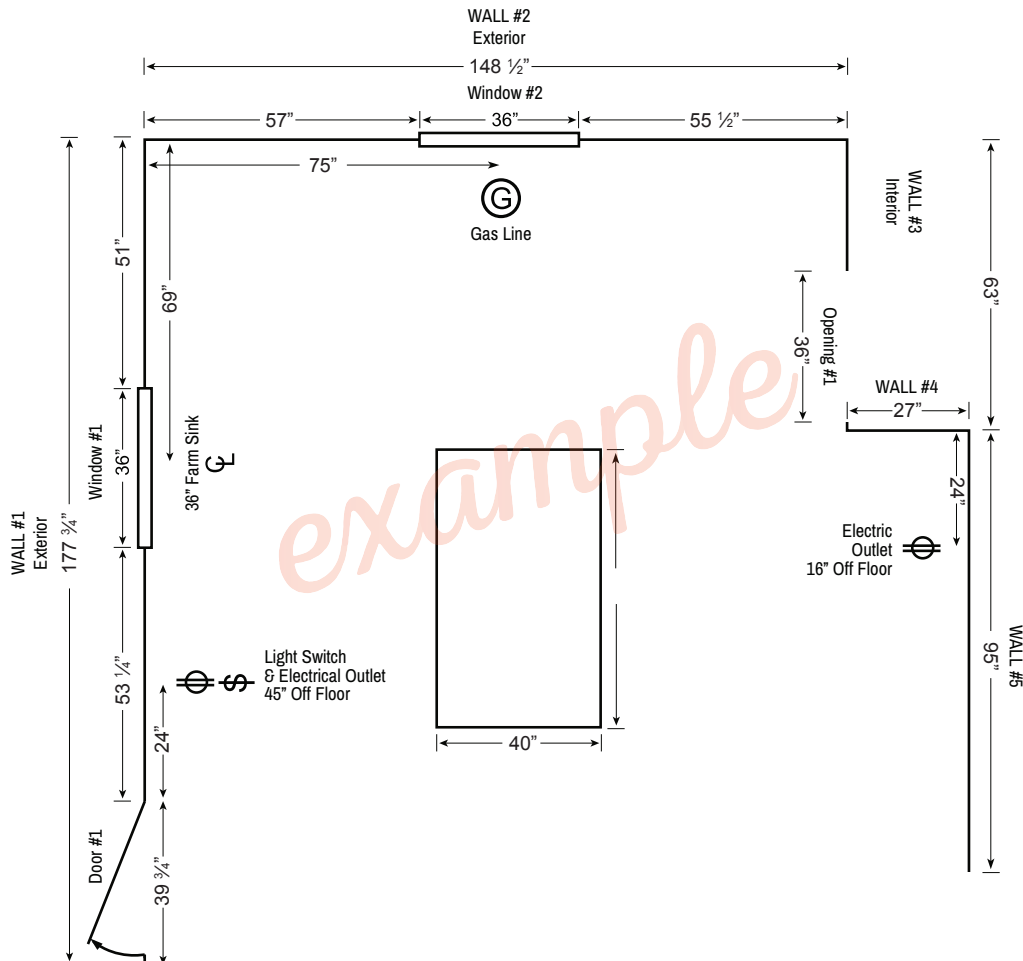
Designer:

City:

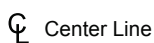
State:

Zip Code:

Please use the example below for your reference while creating the floor plan of your space.



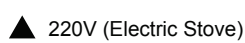
Utility/Mechanical Legend: Use these symbols on your floor plan.



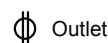
Center Line



Light Switch



220V (Electric Stove)



Outlet



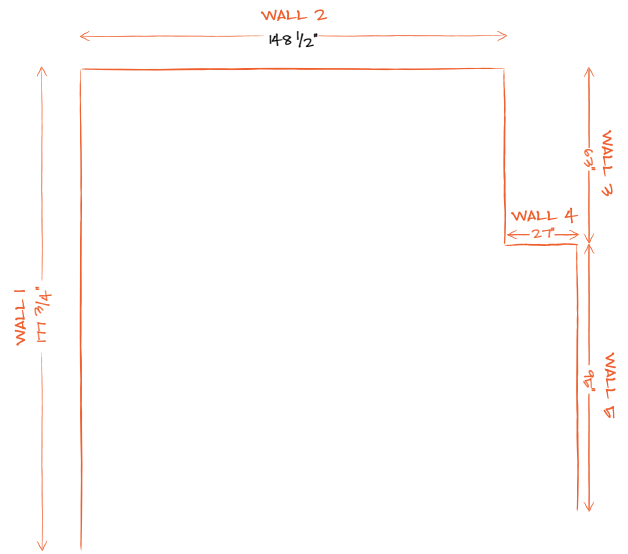
Gas

Step 1: Measure Your Space

- Starting in the left corner, measure each wall in the space that will contain cabinets and record those measurements (in inches) on the "Floor Plan Design Grid" located on the last page of this Measuring Guide.
- Number each wall on the floor plan.



Be sure to measure the full length of each wall.

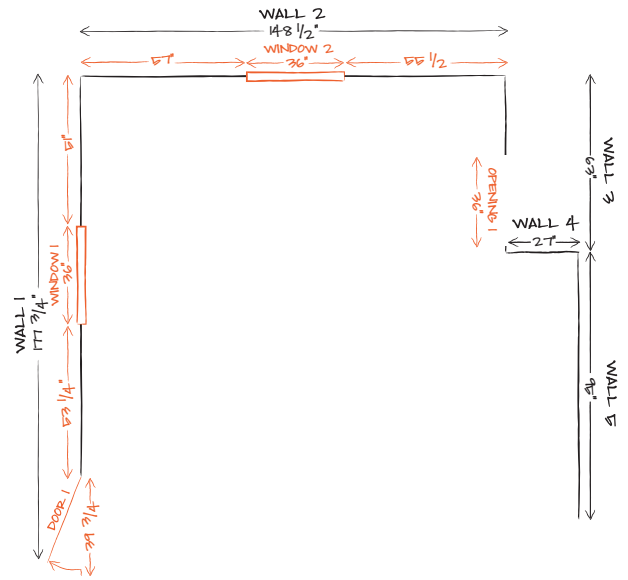


Step 2: Doors, Windows, Room Openings

- Locate and measure doors, windows and room openings.
- Record and Number each door, window and room opening on the grid.
- Record the corresponding dimensions in the measurement charts below.



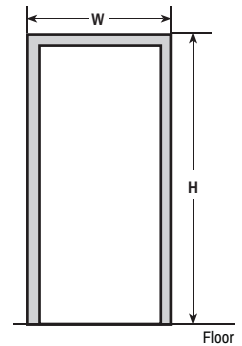
When measuring doors, windows and room openings include the trim/casing in the dimensions.



Door/Opening Measurements

*Label on Floorplan using the corresponding numbers below

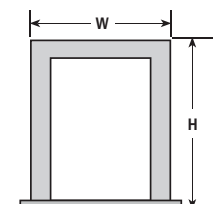
Opening or Door	Width	Height	Notes:
1			
2			
3			
4			



Windows Measurements

*Label on Floorplan using the corresponding numbers below

Window	Width	Height	Notes:
1			
2			
3			
4			



Step 5: Ceiling Height

Accurate ceiling height measurements are very important when determining which wall cabinets and crown moulding you want in your new kitchen. It is very important to take several measurements as the height can vary in different spots in the room. Many older homes have soffits above their wall cabinets that need to be taken into consideration when creating your design.



Measure height in 3 areas and record the shortest dimension.

A = Ceiling Height

Ceiling Height: _____

Soffits (the area between the top of the wall cabinet and the ceiling).

Does the room have soffits?

If yes, please mark the diagram to the right.

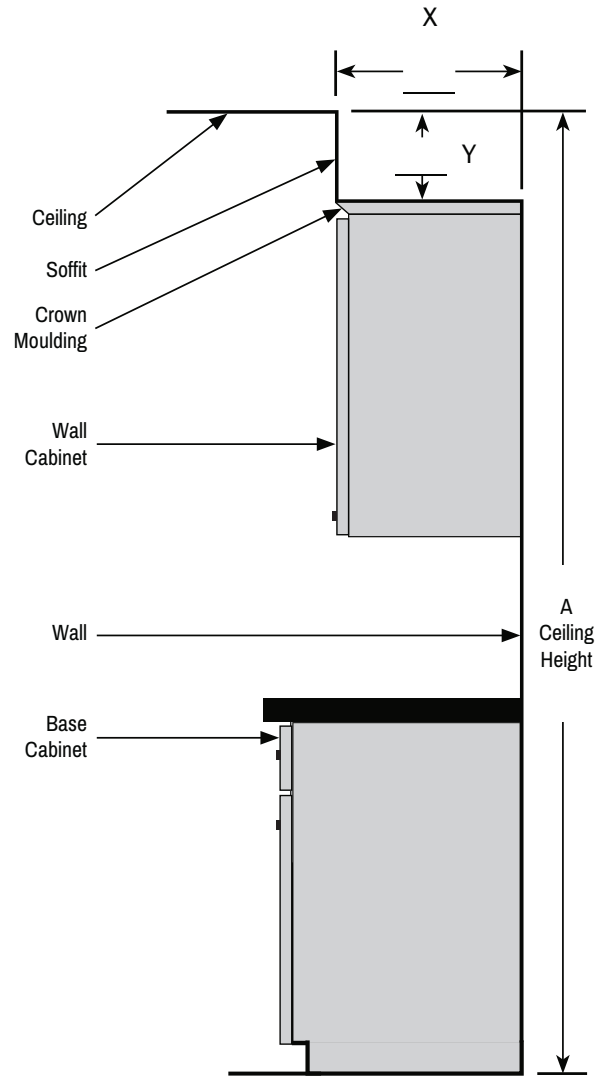
Yes No

Do you plan to keep the existing soffits?

Yes No

Please check any additional items you are interested in adding:

- | | | | |
|---|---|--|---|
| <input type="checkbox"/> Base Molding | <input type="checkbox"/> Garbage Pull Out Cabinet | <input type="checkbox"/> Microwave Upper Cabinet | <input type="checkbox"/> Soft Close Doors |
| <input type="checkbox"/> Crown Molding | <input type="checkbox"/> Glass Doors | <input type="checkbox"/> Open Shelves | <input type="checkbox"/> Wide Storage Drawers |
| <input type="checkbox"/> Crown Molding on the Ceiling | <input type="checkbox"/> Lazy Susan | <input type="checkbox"/> Plate Rack | <input type="checkbox"/> Wine Storage |
| <input type="checkbox"/> Cutlery Divider | <input type="checkbox"/> Light Rail Molding | <input type="checkbox"/> Roll Out Trays | <input type="checkbox"/> Wood Hood |
| <input type="checkbox"/> Decorative Door Panels | <input type="checkbox"/> Microwave Base Cabinet | <input type="checkbox"/> Spice Pull Out Cabinet | |



Step 6: Photos & Submit

Now that you have completed the measuring guide, it is time to take some photos of your current space. Make sure to include pictures of each wall that will contain cabinets.



Include photos of any special obstacles that you may have found difficult to include in your drawing.

Three Ways to Submit:



Online: Click on "Start Your Free Design" on the homepage. Fill out the form and attach the measuring guide and pictures.



Email: Attach the measuring guide and pictures and email to Hello@brionigranite.com



Fax: (Not Recommended) Send measuring guide and pictures to 314-638-0500

Thank you for completing your measuring guide. A member of our design team will be in touch with you within 24 hours and will have your drawings and quote done within 48 hours.

Floor Plan Design Grid

Use the grid below to draw the floor plan (aerial view) of your space. Follow each step of the guide to complete the drawing.

- Step 1: Measure your space
- Step 2: Doors, Windows & Room Openings
- Step 3: Obstacles
- Step 4: Appliances
- Step 5: Ceiling Height
- Step 6: Photos and Submit

Note: Each small square is 3" x 3" and each large square is 12" x 12".

